

How  
**GREEN**  
is your building?



quality  
products

**Kimberly-Clark Professional and LEED®.**  
*Creating **quality products**  
for environmental solutions.*

# Environmental Stewardship

## At Kimberly-Clark Green Means Business

Each day, millions of people rely on Kimberly-Clark brands to enhance their health, hygiene and well-being. It's a tremendous responsibility. And it's what drives Kimberly-Clark's commitment to our products, our customers, and the environment that we collectively share.

The fact is that superior environmental performance is vital to our success. It's also our responsibility as a corporate citizen. Kimberly-Clark's efforts are guided by company-wide objectives for improving operational performance in energy, water, waste and environmental management systems. Here are just a few of our positive steps:

- Improved energy efficiency by 19 percent since 2000 – *that's enough energy saved to power 180,000 homes for an entire year.*
- Recycled or converted into energy approximately 69 percent of manufacturing waste in 2005 – *that's equivalent to the annual waste generated by a city the size of Chicago.*
- Reduced water use by 29 percent since 2000 – *that's enough water savings to supply the domestic water usage for the cities of Philadelphia and Ottawa, Canada for an entire year.*
- Required certification for 100 percent of our fiber suppliers from one of five internationally recognized forest certification systems by the end of 2006.

Kimberly-Clark's environmental focus is integrated into our business strategy and decision-making processes. This enables us to be an environmentally responsible company providing environmentally sound product solutions to our customers.

## Commercial Buildings and the Environment



Buildings are part of our daily lives. We live, work, and play in them. In fact, people spend up to 90 percent of their time indoors. Buildings also have a significant impact on our environment, economy, health and productivity.

### DID YOU KNOW?

- Commercial buildings consume **36 percent** of the nation's total energy and **65 percent** of our total electricity.
- Commercial buildings are responsible for **30 percent** of the country's greenhouse gas emissions, raw material usage, and waste output.
- Poor indoor air quality **costs the U.S. economy \$168 billion** each year.





Kimberly-Clark Professional strongly believes that to help you create a successful green building, we must provide product systems that meet both environmental standards and your high quality standards.

When we design systems that allow your visitors to use less product, it's a big win for the environment – and a big savings for you.

Higher-quality products made with a sensible amount of recycled material are a better environmental value than products made with 100% recycled material. The reason: higher-quality, better-performing products allow users to use less. That means less waste heading to the landfill – and less impact on the environment.

That's why Kimberly-Clark Professional has joined with the U.S. Green Building Council (USGBC), the nation's leading nonprofit coalition advancing buildings that are environmentally responsible, profitable and healthy places to live and work. Our partnership is primarily in support of the Council's LEED® program for existing buildings.

### What is LEED?

LEED (Leadership in Energy and Environmental Design) is a green building rating system developed by USGBC specifically for buildings like yours. It provides the most comprehensive framework for assessing a building's overall environmental performance. LEED was created to:

- Establish a common standard of environmental performance
- Promote the buildings that are environmentally responsible, economically profitable, and healthy, productive places to live and work
- Increase awareness of the benefits of a green building

LEED maintains industry-leading strategies for sustainable site development based on scientific standards. This helps you with water savings, energy efficiency and materials selection (such as towels and tissue) for your entire building.

LEED also recognizes achievement and encourages increased education in green building development through project certification, professional accreditation, training and practical resources.



# Putting LEED® Principles Into Practice

## Cleaner, Greener Solutions

At Kimberly-Clark Professional, we're committed to designing environmentally sound product and packaging solutions that are compatible with LEED principles. All of the innovative source-reduced product systems you see here promote using less, wasting less and leaving less. That, of course, means less impact on our environment. Many of these products also last longer than standard tissue, towel and skincare products.

### WYPALL®

#### Microfiber Cloths

- No chemicals needed
- Absorbs up to eight times their weight in liquid
- Can be laundered 300 times



### SCOTT® SCOTTFOLD® Towels

**40.2%** reduction in  
packaging waste vs. C-Folds<sup>5</sup>

- Hygienic, touchless, one-at-a-time dispensing
- Patented fold creates 2-ply thickness

### KIMCARE® ALL-N-1 Skin Care System

**47.0%** reduction in packaging  
waste vs. 800 mL Bag-in-Box<sup>6</sup>

- A replaceable soap system that provides a new, clean dispenser with each refill



<sup>1</sup> Number based on 1,000 cases/year of 50600 versus 01500

<sup>2</sup> Number based on 1,000 cases/year of 01000 versus 01804

<sup>3</sup> Number based on 1,000 cases/year of 07006 versus 07805

<sup>4</sup> Number based on 1,000 cases/year of 04007 versus 04460

<sup>5</sup> Number based on 1,000 cases/year of 01970 versus 01500

<sup>6</sup> Number based on 100 cases/year 2.5L ALL-N-1 versus 800mL Bag-in-Box

<sup>7</sup> Number based on one year usage comparison – TC3000 versus Kimcare® Continuous Air Freshener System

# Cleaner, Greener



**KLEENEX®**  
Hard Roll Towels

**70.8%** reduction  
in packaging waste<sup>1</sup>

- High capacity 600' roll – fewer runouts
- Features ABSORBENCY POCKETS\* for better absorbency
- Now available in convenient 6-roll case

**SCOTT®**  
Hard Roll Towels

**45.8%** reduction in packaging  
waste vs. M-Folds<sup>2</sup>

- Ultra high capacity towels (950' to 1000')
- Reduced maintenance time
- Now available in convenient 6-roll case

**SCOTT® Coreless**  
JRT Bath Tissue

**37.0%** reduction  
in packaging waste vs.  
cored JRT Tissue<sup>3</sup>

- Reduced runouts and fewer refills
- 100% core & paper wrap elimination
- Easy maintenance

**SCOTT® Coreless**  
Standard Roll Bath Tissue

**54.6%** reduction in  
packaging waste vs.  
standard roll bath tissue<sup>4</sup>

- Each roll has nearly 62% more tissue per roll than standard roll bath tissue
- 100% core & paper wrap elimination

**KIMCARE® Continuous**  
Air Freshener System

**61.9%** less waste<sup>7</sup>

- No battery replacement, completely self-powered
- Economical and easy to install
- Low maintenance

# Greener Solutions



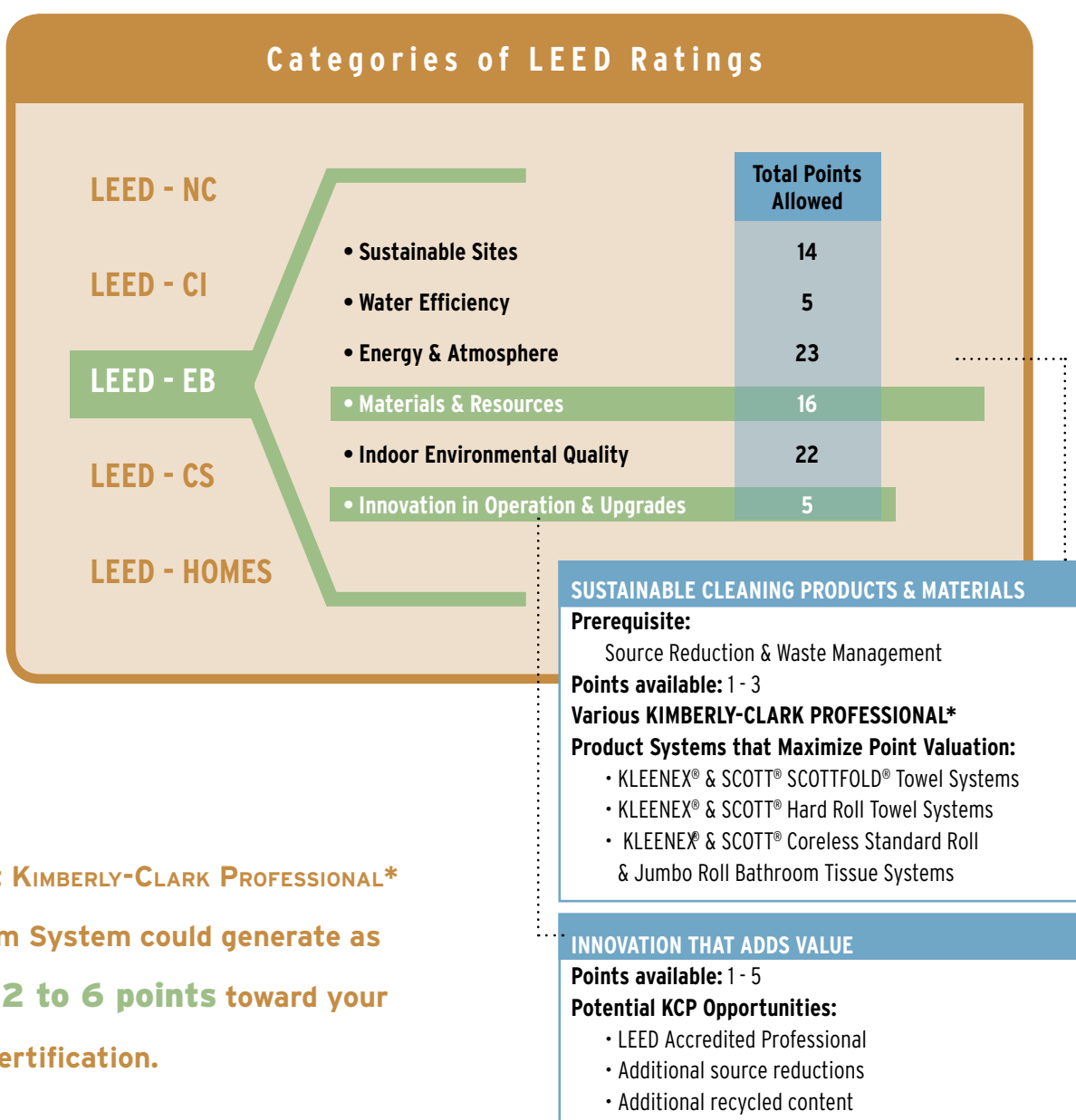


# An Innovative Team

## The Proven LEED® Program

The LEED for Existing Buildings (LEED-EB) Program is designed to evaluate the operational processes of the following criteria: Sustainable Sites, Water Efficiency, Energy & Atmosphere, Materials & Resources, Indoor Environmental Quality, and Innovation in Operation & Upgrades.

KIMBERLY-CLARK PROFESSIONAL\* Products can go a long way in helping you become LEED certified.



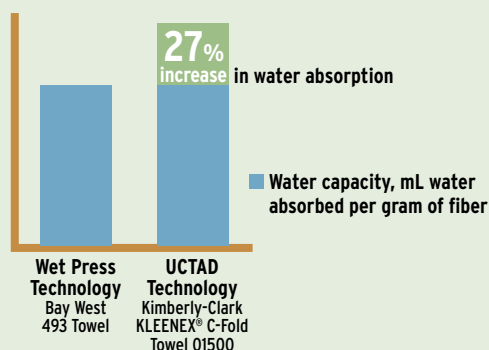
The right KIMBERLY-CLARK PROFESSIONAL\* Washroom System could generate as many as 2 to 6 points toward your facility certification.



## Our Innovative UCTAD Technology

Kimberly-Clark Professional's exclusive UCTAD Technology improves the absorbency of our cleaner, greener towels. That, coupled with our Balanced Fiber approach (recycled fibers, new fibers and high-yield fibers) ensures superior-performing, environmentally friendly products.

**KIMBERLY-CLARK PROFESSIONAL\* Towels  
with ABSORBENCY POCKETS\* Feature  
Outperform the Competition†**



## Absorbency and dispensability = satisfied tenants and guests

### ABSORBENCY

KLEENEX® and SCOTT® Towels, with our exclusive ABSORBENCY POCKETS\* Feature, absorb more water, faster than many conventional heavy wet press towels. The result: fewer towels used and less waste.

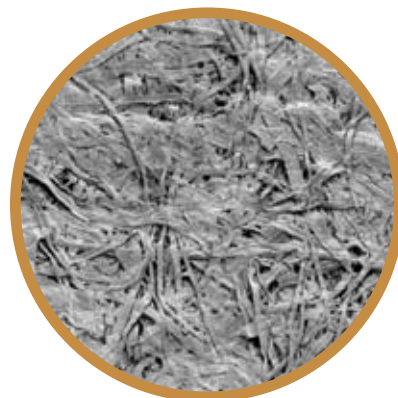
### DISPENSABILITY

Tabbing, tearing, and multiple dispensing can lead to waste and a messy restroom. KLEENEX® SCOTTFOLD® Towels are designed to reduce tabbing, tearing and multiple dispensing, even when loaded upside down.



**UCTAD Technology with  
ABSORBENCY POCKETS\* Feature.**  
Our patented ABSORBENCY POCKETS\*  
Feature provides excellent absorbency  
and hand-drying performance.

Kimberly-Clark KLEENEX® SCOTTFOLD® Towel 01999



**Competitive Wet Press Technology.**  
Packed fibers cause water to sit  
on the towel, delaying absorbency  
and increasing waste.

Bay West 493 Towel; Green Seal Certified

# Our Cleaner, Greener Washroom Solutions

Source reduction is at the top of the EPA's hierarchy of waste-reduction techniques because it reduces all impacts of the material life cycle including supply chain, use, recycling and waste disposal.

## Achieving Real Source Reduction

At Kimberly-Clark Professional, we are constantly working to design and produce source-reduced washroom products that create less waste, require less packaging, dispense more effectively, and last longer.

Through redesigned products and packaging, we have improved product performance so our customers can use less, waste less and spend less.

Our emphasis on source reduction lets you control waste by controlling the materials that lead to the problem. Our program, in combination with recycled fiber content, requires less landfill capacity and conserves natural resources.

It comes down to this: the less waste consumers produce, the fewer problems they will have disposing of that waste — and the less it will cost.

## Take a good look at the difference

Compare the waste produced by just one case of a commodity-format product to distinctive coreless tissue systems from Kimberly-Clark Professional.



SCOTT® Coreless Standard Roll Bathroom Tissue has 54.6% less packaging waste vs. standard roll tissue.<sup>1</sup>



SCOTT® Coreless JRT Tissue has 37% less packaging waste vs. SCOTT® JRT Tissue with core.<sup>2</sup>



<sup>1</sup> SCOTT® Coreless Standard Roll Bathroom Tissue vs. new SCOTT® Standard Roll Bathroom Tissue 04460-50.

<sup>2</sup> SCOTT® Coreless JRT Jr. Jumbo Roll Bathroom Tissue vs. new SCOTT® JRT Jr. Jumbo Roll Bathroom Tissue 07805.





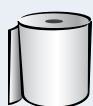
## Reducing our impact

Source reduction is at the top of the EPA's hierarchy of waste-reduction techniques because it reduces all impacts of the material life cycle including supply chain, use, recycling and waste disposal.

### Select product comparisons represented

(Number based on 1000 cases/year of each commodity)	Packaging weight per case, lb.	Hand dries or uses per case	Hand dries or uses per 1000 cases (commodity format)	Cases of distinctive product to equal same number of hand dries	Packaging waste commodity format, lb.	Packaging waste distinctive format, lb.	Packaging waste saved, lb.	Percent reduction in packaging waste
01500 C-Fold (C)	1.61	1,032	1,032,000		1,606.6			
<b>01970 SCOTT® SCOTTFOLD® Towel (D)</b>	1.47	1,583		652		960.3	646.3	40.2%
01500 C-Fold Towel (C)	1.61	1,032	1,032,000		1,606.6			
<b>50600 KLEENEX® Hard Roll Towel (D)</b>	2.32	5,100		202		469.9	1,136.7	70.8%
01804 Multi-Fold Towel (C)	1.37	1,607	1,607,000		1,374			
<b>01000 SCOTT® Hard Roll Towel (D)</b>	2.76	5,967		269		744.5	629.9	45.8%
04460 Standard Roll Bath Tissue (C)	3.84	1,588	1,588,000		3,839			
<b>04007 SCOTT® Coreless Standard Roll Bathroom Tissue (D)</b>	1.73	1,576		1,008		1,744.4	2,094.6	54.6%

C = Commodity Format  
D = Distinctive Format

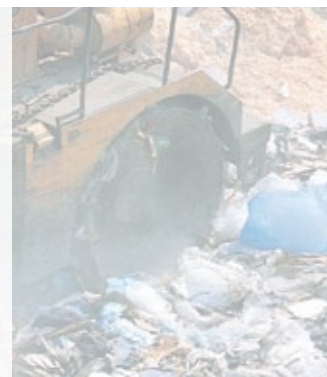


Saves more than  
**1 TON**  
of waste material  
from the landfill

(based on 1.5 million uses of  
SCOTT® Coreless SRB Tissue)



When you use  
**KIMBERLY-CLARK PROFESSIONAL\***  
Products, the savings add up.  
The waste doesn't.



# A Cleaner, Greener Cleanup

## Environmentally friendly cleaning for office buildings, healthcare facilities and lodging.

New WypALL® Microfiber Cloths make it easy to reduce your annual cleaning costs by improving your efficiency and reducing chemical use.

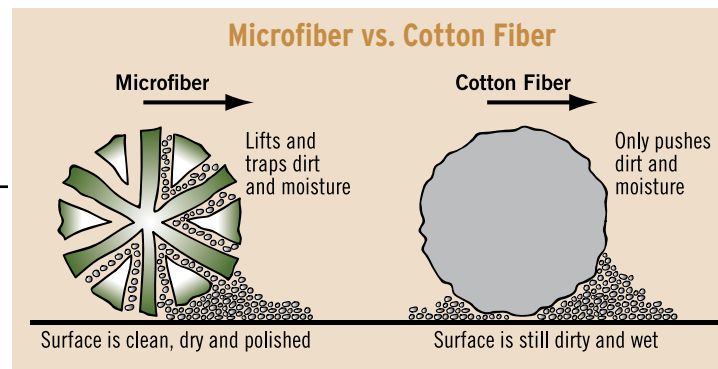
To help reduce cross contamination, just choose the right color for your application.



To get the green clean, look for the green seam.



Color coding helps reduce cross contamination



### Environmentally Friendly

- No chemicals needed

### Cleans Virtually Any Surface

- Lifts and traps dirt and moisture
- Use wet, dry or damp

### Economical and Efficient

- Absorbs up to 8 times their weight in liquid
- Can be laundered 300 times



## WYPALL® L20 and L10 Wipers for high-capacity absorbency.

The better a wiper absorbs, the fewer wipers you'll need for everything from cleaning to wiping up spills. That can lead to source reduction – and a greener clean.



### WYPALL® L20 Wipers<sup>1</sup>

- Textured for extra cleaning power
- No binders or glues
- Multi-ply capacity for large spills

#### TASKS:

- Single-use parts & tool cleanups
- Mining operations maintenance
- Hydraulic leak soakers and wiping
- General-purpose field utility wiping
- Conveyor and roller cleaning
- Retail store maintenance & cleaning



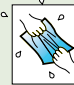

### WYPALL® L10 Wipers

- Strength and durability for general cleanup tasks

#### TASKS:

- Spray and wipe jobs
- Glass surface cleaning
- Absorb small liquid spills
- Detail and final assembly wiping

#### PROPERTIES

				
	Solvent Resistance	Absorption Capacity	Wet Strength	Absorption Rate
WYPALL® L20 Wipers	● ○ ○ ○ ○	● ● ● ● ○	● ○ ○ ○ ○	● ● ○ ○ ○
WYPALL® L10 Wipers	● ○ ○ ○ ○	● ● ○ ○ ○	● ○ ○ ○ ○	● ● ○ ○ ○



<sup>1</sup> This product meets U.S. EPA standards for 40% post-consumer waste paper content



# Clearing the Air

**"The right HVAC air filter strategy can contribute to a greener environment and also help you meet LEED® prerequisites and credit requirements."**

## Cleaner, Greener Air Filtration Solutions

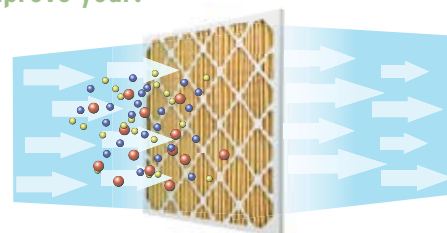
Choosing the right air filter for your HVAC system can reduce the negative impact that your building has on the environment, the economy, and even employee productivity. That's why KIMBERLY-CLARK\* Filtration Media should be an integral part of your building's **green** strategy.

Why green air filters? Simply put, a green air filter provides a high level of filtration efficiency that improves indoor air quality while providing low airflow resistance. This minimizes energy consumption and greenhouse gas emissions.

Green air filters also provide long life for fewer change outs and use minimal components to reduce source and waste streams. Overall, green air filters can be effective in reducing building operating expenses as well as protecting the environment.

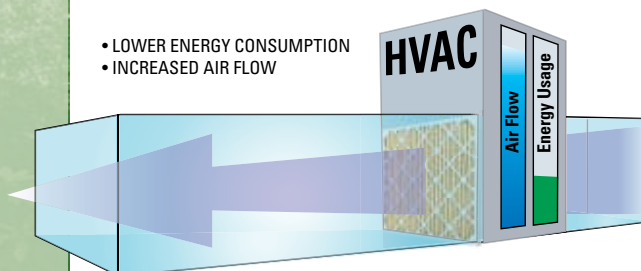
### KIMBERLY-CLARK\* Filtration Media can improve your:

- Indoor Air Quality
- Energy Efficiency
- Greenhouse Gas Emissions
- Source and Waste Stream Reduction

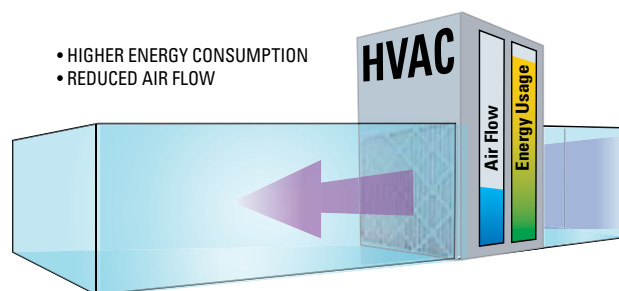


Since filters are disposable products, they have a significant impact on the waste stream of a building. By using an extended-life filter, or by using filters with fewer or lighter weight components, you can reduce both the source and waste streams of your building. For more information on our air filtration products, please visit [www.kcfiltration.com](http://www.kcfiltration.com).

- LOWER ENERGY CONSUMPTION
- INCREASED AIR FLOW



- HIGHER ENERGY CONSUMPTION
- REDUCED AIR FLOW





## Creating A Cleaner, Greener Future

### Kimberly-Clark Professional is Leading the Way

At Kimberly-Clark Professional, we are totally committed to producing environmentally sound products that help you create an eco-friendly, economically profitable, productive and healthy place for people to live and work.

We join with the U.S. Green Building Council in continuously striving for better overall environmental performance, creating products with superior performance, more efficient dispensing, less packaging and less waste.

#### How your building can take the lead

Create and maintain a truly green building by following the most comprehensive environmental standard in the industry: LEED®. And to help you achieve LEED certification, count on Kimberly-Clark Professional.

quality  
products



You'll find our full range  
of cleaner, greener products  
on the following pages.

To learn more, go to

[www.kcprofessional.com/us/Resource-Center/environment.asp](http://www.kcprofessional.com/us/Resource-Center/environment.asp)

**Kimberly-Clark Professional and LEED.**  
*Creating **quality products**  
for environmental solutions.*

# Our Products

CODE	DESCRIPTION	COLOR	PLY	SIZE W" X L"	QUANTITY/ PACK	UNITS/ CASE	QUANTITY/ CASE
<b>Folded Towels</b>							
01900 <sup>1</sup>	KLEENEX® SCOTTFOLD® Towels	White	1	8.1" x 12.4"	120 sts.	20 pks.	2,400 sts.
01999 <sup>1</sup>	KLEENEX® SCOTTFOLD® Towels	White	1	9.4" x 12.4"	120 sts.	16 pks.	1,920 sts.
01970 <sup>1</sup>	SCOTT® SCOTTFOLD® Towels	White	1	9.4" x 12.4"	175 sts.	20 pks.	3,500 sts.
01950 <sup>1</sup>	SCOTT® SCOTTFOLD® M Towels	White	1	8.1" x 12.4"	175 sts.	20 pks.	3,500 sts.
01890 <sup>1</sup>	KLEENEX® Multi-Fold Towels	White	1	9.2" x 9.4"	150 sts.	16 pks.	2,400 sts.
01804	SCOTT® Multi-Fold Towels	White	1	9.2" x 9.4"	250 sts.	16 pks.	4,000 sts.
<b>Hard Roll Towels</b>							
01000 <sup>1</sup>	SCOTT® 1000' Hard Roll Towels	White	1	8" x 1000'	1,000 ft.	12 rolls	12,000 ft.
01005 <sup>1</sup>	SCOTT® 1000' Hard Roll Towels	White	1	8" x 1000'	1,000 ft.	6 rolls	6,000 ft.
50606 <sup>1</sup>	KLEENEX® Hard Roll Towels (1.75" core)	White	1	8" x 600'	600 ft.	6 rolls	3,600 ft.
01080 <sup>1</sup>	KLEENEX® Hard Roll Towels	White	1	8" x 425'	425 ft.	12 rolls	5,100 ft.
02000 <sup>1</sup>	SCOTT® High Capacity Hard Roll Towels	White	1	8" x 950'	950 ft.	6 rolls	5,700 ft.
02068 <sup>1</sup>	SCOTT® Hard Roll Towels	White	1	8" x 400'	400 ft.	12 rolls	4,800 ft.
<b>Coreless Bath Tissue</b>							
07001	KLEENEX® COTTONELLE® Coreless Standard Roll Bathroom Tissue	White	2	4.0" x 4.4"	800 sts.	36 rolls	28,800 sts.
04007 <sup>1</sup>	SCOTT® Coreless Standard Roll Bathroom Tissue	White	2	4.0" x 4.4"	1,000 sts.	36 rolls	36,000 sts.
07006 <sup>1</sup>	SCOTT® Coreless JRT Jr. Bathroom Tissue	White	2	3.78" x 1150'	1,150 ft.	12 rolls	13,800 ft.
07005 <sup>1</sup>	SCOTT® Coreless JRT Jr. Bathroom Tissue	White	1	3.78" x 2300'	2,300 ft.	12 rolls	27,600 ft.
<b>Brown Towels</b>							
02021 <sup>1</sup>	SCOTT® Hard Roll Towels	Natural	1	8" x 400'	400 ft.	12 rolls	4,800 ft.
04142 <sup>1</sup>	SCOTT® Hard Roll Towels	Natural	1	8" x 800'	800 ft.	12 rolls	9,600 ft.
01801 <sup>1</sup>	TRADITION® Multi-Fold Towels	Natural	1	9.2" x 9.4"	250 sts.	16 pks.	4,000 sts.
<b>WYPALL® Wipers</b>							
83610	WYPALL® Microfiber Cloths, General Purpose	Yellow	–	15.75" x 15.75"	6 cloths	4 bags	24 cloths
83620	WYPALL® Microfiber Cloths, Bathroom/Fixture	Blue	–	15.75" x 15.75"	6 cloths	4 bags	24 cloths
83630	WYPALL® Microfiber Cloths, Glass/Mirror	Green	–	15.75" x 15.75"	6 cloths	4 bags	24 cloths
47026 <sup>1</sup>	WYPALL® L20 Wipers / Pop-Up® Box	Brown	multi	9.1" x 16.8"	100 sts.	10 boxes	1,000 sts.
47044 <sup>1</sup>	WYPALL® L20 Wipers / Pop-Up® Box	White	4	9.1" x 16.8"	88 sts.	10 boxes	880 sts.
34607 <sup>1</sup>	WYPALL® L20 Wipers / BRAG® Box	White	4	12.5" x 16.8"	176 sts.	1 box	176 sts.
58399 <sup>1</sup>	WYPALL® L20 Wipers / BRAG® Box	Brown	multi	12.5" x 16.8"	176 sts.	1 box	176 sts.
47000 <sup>1</sup>	WYPALL® L20 Wipers / 1/4 fold	Brown	multi	12.5" x 14.4"	68 sts.	12 boxes	816 sts.
47022 <sup>1</sup>	WYPALL® L20 Wipers / 1/4 fold	White	4	12.5" x 14.4"	68 sts.	12 boxes	816 sts.
05320	WYPALL® L10 Wipers / Pop-Up® Box Utility Wipes	White	1	9.0" x 10.5"	125 sts.	18 boxes	2,250 sts.
05322	WYPALL® L10 Wipers / Pop-Up® Box Utility Wipes	White	1	12.0" x 10.5"	125 sts.	18 boxes	2,250 sts.

<sup>1</sup> Meets U.S. EPA standards for minimum post-consumer waste content: towels and wipers – 40%, bathroom tissue – 20%





CODE	KIMCARE® HAND CLEANSERS	FRAGRANCE	COLOR	DISPENSER COLOR	CAPACITY	UNITS/ CASE
------	-------------------------	-----------	-------	-----------------	----------	-------------

### Skin Cleansers - ALL-N-1 Skin Care System

95167	Gentle Lotion Skin Cleanser	Floral	Pink	White	1.5 L	4
95253	Gentle Lotion Skin Cleanser	Floral	Pink	White	2.5 L	4
96253	Gentle Lotion Skin Cleanser	Floral	Pink	Black	2.5 L	4
95126	ULTRA-KIND® Gentle Hand Wash	Herbal	Clear	White	1.5 L	4
95154	Antibacterial Clear Skin Cleanser	Light Floral	Clear	White	1.5 L	4
95254	Antibacterial Clear Skin Cleanser	Light Floral	Clear	White	2.5 L	4
96250	Antibacterial Clear Skin Cleanser	Light Floral	Clear	Black	2.5 L	4
95155	Health Care Personnel Handwash	Cucumber	Straw	White	1.5 L	4
95258	E-2 Rated Skin Cleanser	Medicinal	Pale Yellow	White	2.5 L	4
95150	Instant Hand Sanitizer	Sweet Citrus	Clear	White	1.2 L	4
95151	Moisturizing Instant Hand Sanitizer	Fruity Cucumber	White	White	1.2 L	4
95165	Hair & Body Wash	Citrus, Floral	Golden	White	1.5 L	4
95259	Hair & Body Wash	Citrus, Floral	Golden	White	2.5 L	4

CODE	DESCRIPTION	FRAGRANCE	COLOR	CASE
------	-------------	-----------	-------	------

### Air Fresheners

91067	KIMCARE® Continuous Air Freshener	Citrus	Clear	6
91069	KIMCARE® Continuous Air Freshener	Arctic	Clear	6
91072	KIMCARE® Continuous Air Freshener	Ocean	Clear	6
91073	KIMCARE® Continuous Air Freshener	Meadow	Clear	6
91075	KIMCARE® Continuous Air Freshener	Forest	Clear	6

CODE	DESCRIPTION	COLOR	W x H x D	CASE
------	-------------	-------	-----------	------

### Air Freshener Dispensers

92620	KIMCARE® Continuous Air Freshener Dispenser	White	2.8" x 5.0" x 2.4"	1
92621	KIMCARE® Continuous Air Freshener Dispenser	Black	2.8" x 5.0" x 2.4"	1

**Scott® 1,000' Towels** – made of 40% post-consumer waste content; elemental chlorine-free (ECF) bleaching; packaging reduction through providing greater feet per case and 25% more towels on each core (compared to 800' roll towels).

**Coreless Bath Tissue** – minimum 45% post-consumer recycled waste; elemental chlorine-free (ECF) bleaching; packaging reduction with 100% elimination of core waste and up to 15% more paper per case – meaning fewer cases needed to supply the same paper.

**Brown Towels** – made of 100% recovered materials; minimum 60% post-consumer recycled waste; elemental chlorine-free (ECF) bleaching; and are made from recycled cardboard.

For more information on our air filtration products, please visit [www.kcfiltration.com](http://www.kcfiltration.com).

## Our Guarantee



*Brought to you by  
Kimberly-Clark Professional*

Your total satisfaction means everything to us. If, for any reason, our products do not meet your expectations, Kimberly-Clark will reimburse you<sup>‡</sup> for your initial purchase, via FREE product, for up to \$1,000.

<sup>‡</sup> Guarantee extended to consuming end-user accounts only.

For more information on Kimberly-Clark Professional, visit us online at **[www.kcprofessional.com](http://www.kcprofessional.com)**, contact your Kimberly-Clark Sales Representative, or call us at 1-888-346-GOKC (4652).

Kimberly-Clark warrants that its products comply with K-C's standard specifications as of the delivery date to K-C's authorized distributors direct purchasers. THIS WARRANTY IS IN LIEU OF ALL OTHER WARRANTIES, EXPRESS OR IMPLIED, INCLUDING ANY WARRANTY OF MERCHANTABILITY OR FITNESS FOR A PARTICULAR PURPOSE. K-C is not liable for any kind of special, incidental, or consequential damages. K-C's liability for breach of contract, tort, or other cause of action shall not exceed the product purchased price. Purchasers and users are deemed to have accepted the above warranty and limitation of liability, and cannot change the terms by verbal agreement or by any writing not signed by K-C.